




Knowledge E
Engaging minds

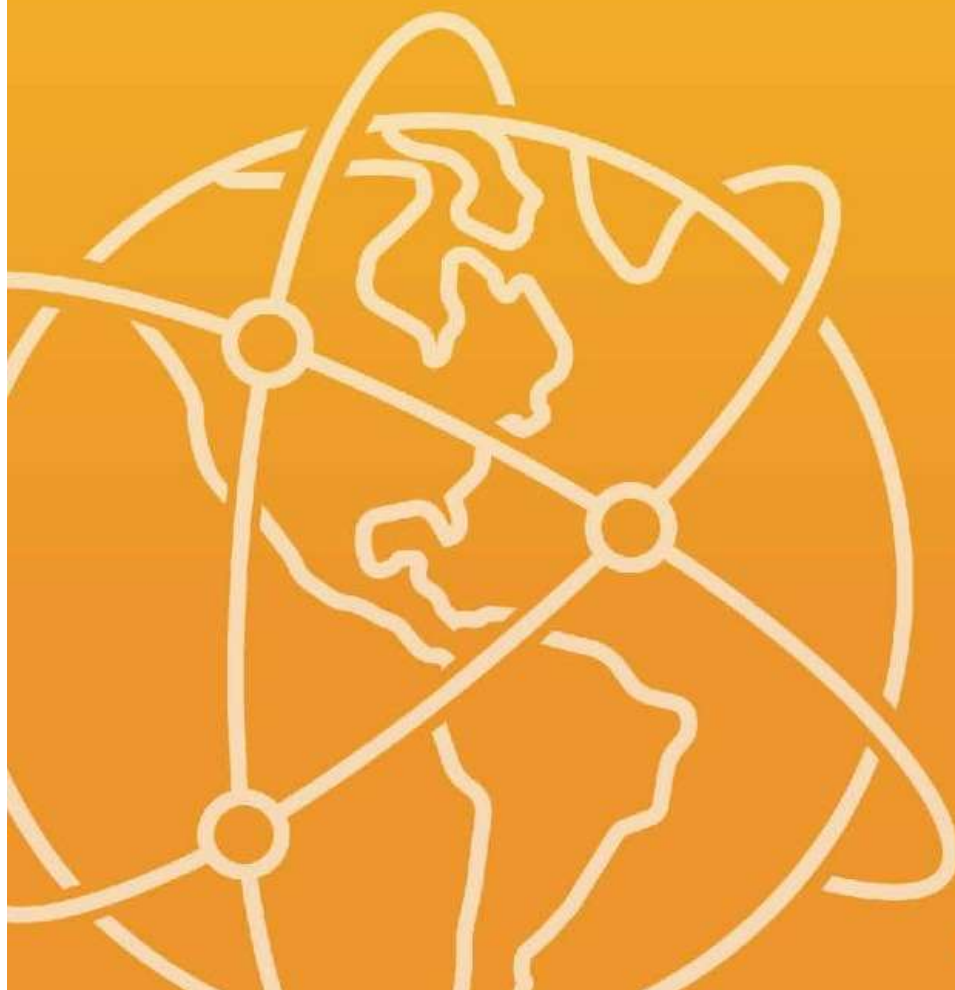


KnE Social Sciences

International Conference on Economics, Business and Economic Education 2018 (ICE-BEES 2018)

17–18 July 2018

ISSN 2518-668X



www.KnEpublishing.com

International Conference on Economics, Business and Economic Education 2018 (ICE-BEES 2018)



PUBLISHED
2018-10-22

[KnE Social Sciences](#) / International Conference on Economics, Business and Economic Education 2018 (ICE-BEES 2018)

International Conference on Economics, Business and Economic Education (ICE-BEES) 2018 is a refereed conference organized by the Faculty of Economics, Universitas Negeri Semarang, Indonesia, in collaboration with Universiti Teknologi MARA, Malaysia. The conference was held on 17–18 July 2018 at Grasia Hotel in Semarang City, Central Java Province, Indonesia. The aim of the conference was to provide an opportunity to the researchers, students, government officials, and professionals to share their research with a broader community and get a better understanding on the current state of research or ideas in the field of economics, business and economic education. This conference is expected to develop a strong network for researchers with the same interests or in same fields and also serve as a medium for new or young researchers to establish a strong relationship with experienced ones. In this conference, all levels of university students had the opportunity to present their final or current works and received friendly feedbacks from academics and peers.

Conference topics: Sub-topics of Accounting: Financial Accounting, Managerial Accounting, Behavioural Accounting, Auditing and Assurance, Public Sector Accounting, Islamic Accounting, Environmental Accounting, Accounting Information System, Taxation. **Sub-topics of Management:** Strategic Management, Marketing, Human Resource Management, Financial Management, Islamic Finance, Organizational Behaviour, Operational Management, Management Information System, Entrepreneurship. **Sub-topics of Economics:** Sustainable Development, Public Policy, International Trade, Agricultural Economics, Regional Economics, Monetary Economics, Environmental Economics, Rural Development Economics, Industrial Economics, Islamic Economics. **Sub-topics of Economics Education (Accounting, Business and Office Administration, and Cooperative):** Blended Economics Education, Business Education, Higher Education, Accounting Education, Office Administration Education, Cooperative Education, E-Learning, Economics Classroom Action Research, Learning Media, E-Archive Learning.

Conference date: 17–18 July 2018

Location: Semarang City, Central Java, Indonesia

Editor: Dr. Andryan Setyadharna

Organizer: Faculty of Economics, Universitas Negeri Semarang

Sponsor: Faculty of Economics, Universitas Negeri Semarang

Published: 22 October 2018

ISSN: 2518-668X

Academic Civitas Perception to 5 Days School Implementation for Senior High School and Equivalent

[INTERNATIONAL CONFERENCE ON ECONOMICS, BUSINESS AND ECONOMIC EDUCATION 2018 \(ICE-BEES 2018\)](#)

Pages 1–11 • [Triyono .](#), [P Novita Sari](#), [S Lestari](#)

[90 DOWNLOADS](#)

[Download fulltext](#)

Gap Analysis and Measurement of Information Technology Readiness for Improvement of Competitive Capabilities to Small and Medium Enterprises in East Java

[INTERNATIONAL CONFERENCE ON ECONOMICS, BUSINESS AND ECONOMIC EDUCATION 2018 \(ICE-BEES 2018\)](#)

Pages 12–26 • [T Andjarwati](#), [A Hermanto](#), [Supangat .](#)

[85 DOWNLOADS](#)

[Download fulltext](#)

The Role of Corporate Governance in Moderating the Influence of Company Growth and Size on Corporate Social Responsibility Disclosure

INTERNATIONAL CONFERENCE ON ECONOMICS, BUSINESS AND ECONOMIC EDUCATION 2018 (ICE-BEES 2018)

Pages 27–45 • M Khafid, N Baroroh, M Firmansyah

138 DOWNLOADS

[Download fulltext](#)

Accounting of Biological Assets in Indonesian Plantation Companies

INTERNATIONAL CONFERENCE ON ECONOMICS, BUSINESS AND ECONOMIC EDUCATION 2018 (ICE-BEES 2018)

Pages 46–52 • N Baroroh, H Yanto, I Fajarrini, L Agustina

259 DOWNLOADS

[Download fulltext](#)

Carbon Emission Disclosure and Profitability – Evidence from Manufacture Companies in Indonesia

INTERNATIONAL CONFERENCE ON ECONOMICS, BUSINESS AND ECONOMIC EDUCATION 2018 (ICE-BEES 2018)

Pages 53–67 • Salbiah., H Mukhibad

187 DOWNLOADS

[Download fulltext](#)

Remuneration, Motivation, and Performance: Employee Perspectives

INTERNATIONAL CONFERENCE ON ECONOMICS, BUSINESS AND ECONOMIC EDUCATION 2018 (ICE-BEES 2018)

Pages 68–76 • A Mahmud, R Hidayah, R Widhiastuti

242 DOWNLOADS

[Download fulltext](#)

Developing Students Work Readiness Model on Accounting Program of Vocational High School (VHS) Base on I-E-O Astin Model

INTERNATIONAL CONFERENCE ON ECONOMICS, BUSINESS AND ECONOMIC EDUCATION 2018 (ICE-BEES 2018)

Pages 77–90 • M Feriady, H Yanto

113 DOWNLOADS

[Download fulltext](#)

Analysis of Availability of Tourism Infrastructure: Comparative Study in Joglosemar Area

INTERNATIONAL CONFERENCE ON ECONOMICS, BUSINESS AND ECONOMIC EDUCATION 2018 (ICE-BEES 2018)

Pages 91–101 • Fafurida., P Ineke, F Nur Winda

97 DOWNLOADS

[Download fulltext](#)

The Efficiency Analysis of Food Crop Commodities

INTERNATIONAL CONFERENCE ON ECONOMICS, BUSINESS AND ECONOMIC EDUCATION 2018 (ICE-BEES 2018)

Pages 102–113 • A B Setiawan, Fafurida.

48 DOWNLOADS

[Download fulltext](#)

Empirical Investigation on Attitude towards Personal Loans Borrowing

INTERNATIONAL CONFERENCE ON ECONOMICS, BUSINESS AND ECONOMIC EDUCATION 2018 (ICE-BEES 2018)

Pages 114–126 • S Ismail, N Ezaili Alias, W-L Koe, R Othman, M Halim Mahphoth

90 DOWNLOADS

[Download fulltext](#)

Determinant of Carbon Emission Disclosure at Mining Companies Listed in Indonesia Stock Exchange

INTERNATIONAL CONFERENCE ON ECONOMICS, BUSINESS AND ECONOMIC EDUCATION 2018 (ICE-BEES 2018)

Pages 127–141 • N Putri Halimah, H Yanto

229 DOWNLOADS

[Download fulltext](#)

Government Expenditure and Poverty in Indonesia

INTERNATIONAL CONFERENCE ON ECONOMICS, BUSINESS AND ECONOMIC EDUCATION 2018 (ICE-BEES 2018)

Pages 142–153 • H Sasana, P Kusuma

333 DOWNLOADS

[Download fulltext](#)

What Determinants of Academic Fraud Behavior? From Fraud Triangle to Fraud Pentagon Perspective

INTERNATIONAL CONFERENCE ON ECONOMICS, BUSINESS AND ECONOMIC EDUCATION 2018 (ICE-BEES 2018)

Pages 154–167 • Muhsin., Kardoyo., A Nurkhin

1767 DOWNLOADS

[Download fulltext](#)

The Analysis of Monetary Transmission by Interest Rate Channel in Influencing the Inflation: VECM Approach

INTERNATIONAL CONFERENCE ON ECONOMICS, BUSINESS AND ECONOMIC EDUCATION 2018 (ICE-BEES 2018)

Pages 168–179 • F Zulfa, D Aji Suseno

112 DOWNLOADS

[Download fulltext](#)

Factors Influencing the Application of Accounting Conservatism in the Company

INTERNATIONAL CONFERENCE ON ECONOMICS, BUSINESS AND ECONOMIC EDUCATION 2018 (ICE-BEES 2018)

Pages 180–197 • S Rahayu, Kusmuriyanto., Kiswanto., D Indra Gunawan

1664 DOWNLOADS

[Download fulltext](#)

The Causality of Economic Growth and Development of Telecommunications Infrastructure in ASEAN

INTERNATIONAL CONFERENCE ON ECONOMICS, BUSINESS AND ECONOMIC EDUCATION 2018 (ICE-BEES 2018)

Pages 198–210 • Purwanti., D Maya Nihayah

67 DOWNLOADS

[Download fulltext](#)

The Strategic Path Ways to Improves the Performance of Scopus Indexed Journal Publication

INTERNATIONAL CONFERENCE ON ECONOMICS, BUSINESS AND ECONOMIC EDUCATION 2018 (ICE-BEES 2018)

Pages 211–223 • K Budi Mulyono, W Saki, I Nuryana

62 DOWNLOADS

[Download fulltext](#)

The Effect of Teacher's Competency, Physical Environment of Classroom and Family Environment Towards Students' Learning Motivation

INTERNATIONAL CONFERENCE ON ECONOMICS, BUSINESS AND ECONOMIC EDUCATION 2018 (ICE-BEES 2018)

Pages 224–237 • S Marlina, A Rahmawati, Ismiyati.

74 DOWNLOADS

[Download fulltext](#)

School Accountability Model Based on Performance

INTERNATIONAL CONFERENCE ON ECONOMICS, BUSINESS AND ECONOMIC EDUCATION 2018 (ICE-BEES 2018)

Pages 238–248 • J Widodo, N Oktarina, H Pramusinto

61 DOWNLOADS

[Download fulltext](#)

Social Capital and Unseen Inequalities: The Case of Tourism Cluster Dialogue Forum (FRK- Forum Rembuk Klaster)

INTERNATIONAL CONFERENCE ON ECONOMICS, BUSINESS AND ECONOMIC EDUCATION 2018 (ICE-BEES 2018)

Pages 249–260 • L Karolina Br. Sebayang, S Utami

44 DOWNLOADS

[Download fulltext](#)

Improvement Strategy of Principal's Managerial Performance through Adaptability and Organizational Commitment

INTERNATIONAL CONFERENCE ON ECONOMICS, BUSINESS AND ECONOMIC EDUCATION 2018 (ICE-BEES 2018)

Pages 261–272 • S Tri Satyawati, R EkoSiswoyo

89 DOWNLOADS

[Download fulltext](#)

The Influences of Industry Internship, Career Guidance, and Working World Information to the Students Work Readiness of Grade XI SMK Palebon Semarang in Academic Year 2017/2018

INTERNATIONAL CONFERENCE ON ECONOMICS, BUSINESS AND ECONOMIC EDUCATION 2018 (ICE-BEES 2018)

Pages 273–288 • N Purnama, N Suryani, Sapuroh

95 DOWNLOADS

[Download fulltext](#)

The Influence of Learning Motivation, Learning Ways, and Variation of Teaching Styles Towards Learning Activeness in the Subject of Public Administration at Grade X Students of Automatic Expertise Program and Office...

INTERNATIONAL CONFERENCE ON ECONOMICS, BUSINESS AND ECONOMIC EDUCATION 2018 (ICE-BEES 2018)

Pages 289–308 • Sapuroh, N Suryani, F Rozi, N Purnama

58 DOWNLOADS

[Download fulltext](#)

Encouraging Knowledge Sharing Behavior to Boost the Business Performance of Creative Industry (Study in Indonesia SMES's Context)

INTERNATIONAL CONFERENCE ON ECONOMICS, BUSINESS AND ECONOMIC EDUCATION 2018 (ICE-BEES 2018)

Pages 309–320 • N Ariani Wulansari, D Ranikusna, Palupiningdyah

55 DOWNLOADS

[Download fulltext](#)

An Analysis on Business Feasibility and Farmers Income in Semarang of Central Java

INTERNATIONAL CONFERENCE ON ECONOMICS, BUSINESS AND ECONOMIC EDUCATION 2018 (ICE-BEES 2018)

Pages 321–332 • E Soesilowati, N Kariada, A B Setyawan

60 DOWNLOADS

[Download fulltext](#)

Organizational Commitment As Intervening Variable of Intrinsic and Extrinsic Motivation to Organizational Citizenship Behavior

INTERNATIONAL CONFERENCE ON ECONOMICS, BUSINESS AND ECONOMIC EDUCATION 2018 (ICE-BEES 2018)

Pages 333–346 • Mukhodah ., D Ranihusna

76 DOWNLOADS

[Download fulltext](#)

Impact of Foreign Investment and Natural Resources Sharing Funds Against Environmental Degradation in Indonesia

INTERNATIONAL CONFERENCE ON ECONOMICS, BUSINESS AND ECONOMIC EDUCATION 2018 (ICE-BEES 2018)

Pages 347–358 • Priyagus .

46 DOWNLOADS

[Download fulltext](#)

Tourism Development Towards Economic Sustainability of Local Communities in Parangtritis Tourism Area

INTERNATIONAL CONFERENCE ON ECONOMICS, BUSINESS AND ECONOMIC EDUCATION 2018 (ICE-BEES 2018)

Pages 359–366 • M Hulu, M Baiquni, C Fandeli, N Wirasanti

88 DOWNLOADS

[Download fulltext](#)

The Leading Economic Sectors Analysis of Ogan Komering Ulu Selatan District, South Sumatera Province in 2010-2015

INTERNATIONAL CONFERENCE ON ECONOMICS, BUSINESS AND ECONOMIC EDUCATION 2018 (ICE-BEES 2018)

Pages 367–389 • Emawati ., A Asmara

46 DOWNLOADS

[Download fulltext](#)

Dynamic Capabilities: Evidence from Agriculture Cooperatives in Indonesia

INTERNATIONAL CONFERENCE ON ECONOMICS, BUSINESS AND ECONOMIC EDUCATION 2018 (ICE-BEES 2018)

Pages 390–411 • Q Violinda, Sunjian.

75 DOWNLOADS

[Download fulltext](#)

Job Satisfaction in SMA Negeri at Kupang City- East Nusa Tenggara

INTERNATIONAL CONFERENCE ON ECONOMICS, BUSINESS AND ECONOMIC EDUCATION 2018 (ICE-BEES 2018)

Pages 412–421 • H A E Lao, R Ekosiswoyo, J Sutarto, S Eko Pramono

62 DOWNLOADS

[Download fulltext](#)

Remittance, Economic Growth and Household Consumption in Indonesia

INTERNATIONAL CONFERENCE ON ECONOMICS, BUSINESS AND ECONOMIC EDUCATION 2018 (ICE-BEES 2018)

Pages 422–436 • A Eko Sujianto, Mashudi.

107 DOWNLOADS

[Download fulltext](#)

Antecedent Factors of Financial Management Behavior: An Empirical Research Based on Education

INTERNATIONAL CONFERENCE ON ECONOMICS, BUSINESS AND ECONOMIC EDUCATION 2018 (ICE-BEES 2018)

Pages 437–445 • L Amalia Nusron, M Wahidiyah, D Setyo Budiarto

331 DOWNLOADS

[Download fulltext](#)

Shopping With Friend: Buy Now Think Later?

INTERNATIONAL CONFERENCE ON ECONOMICS, BUSINESS AND ECONOMIC EDUCATION 2018 (ICE-BEES 2018)

Pages 446–453 • F Dwijayati Patrikha

61 DOWNLOADS

[Download fulltext](#)

Is More Always Better? An Empirical Investigation of the CAPM and the Fama-French Three-factor Model in Indonesia

INTERNATIONAL CONFERENCE ON ECONOMICS, BUSINESS AND ECONOMIC EDUCATION 2018 (ICE-BEES 2018)

Pages 454–468 • B Sutrisno, R Nasri

158 DOWNLOADS

[Download fulltext](#)

What's Wrong with SISDALSKRIPSI? An Evaluation of the Thesis Control System at UNNES

INTERNATIONAL CONFERENCE ON ECONOMICS, BUSINESS AND ECONOMIC EDUCATION 2018 (ICE-BEES 2018)

Pages 469–479 • Kardoyo., A Nurkhin, Muhsin., H Pramusinto

71 DOWNLOADS

[Download fulltext](#)

The Impact of Type Script Cooperative Learning of the Mutual Cooperation Behavior on Economic Subjects

INTERNATIONAL CONFERENCE ON ECONOMICS, BUSINESS AND ECONOMIC EDUCATION 2018 (ICE-BEES 2018)

Pages 480–491 • M Wahyudin, L Maryani, V Aryanto Sopiandah

50 DOWNLOADS

[Download fulltext](#)

Measuring Regional Islamic Bank Efficiency in Indonesia

INTERNATIONAL CONFERENCE ON ECONOMICS, BUSINESS AND ECONOMIC EDUCATION 2018 (ICE-BEES 2018)

Pages 492–507 • M Panorama

68 DOWNLOADS

[Download fulltext](#)

Diversification Strategies in Developing SMEs Engaging with Local Dairy Milk Products

INTERNATIONAL CONFERENCE ON ECONOMICS, BUSINESS AND ECONOMIC EDUCATION 2018 (ICE-BEES 2018)

Pages 508–517 • K Setiaji, Y Firdam Setiadi

70 DOWNLOADS

[Download fulltext](#)

The Role of Product Knowledge and Attitudes toward Purchasing Intentions: The Moderating Effect of Religiosity on Halal Cosmetics

INTERNATIONAL CONFERENCE ON ECONOMICS, BUSINESS AND ECONOMIC EDUCATION 2018 (ICE-BEES 2018)

Pages 518–529 • N Sriminarti, L Nora

397 DOWNLOADS

[Download fulltext](#)

Policy on Poverty Reduction of Farmers Through Social Capital (Case Study of Farmers in Poor Village Purworejo)

INTERNATIONAL CONFERENCE ON ECONOMICS, BUSINESS AND ECONOMIC EDUCATION 2018 (ICE-BEES 2018)

Pages 530–540 • A Rinawati, Rusdarti., E Soesilowati

51 DOWNLOADS

[Download fulltext](#)

Considering the Influence of Digital Promotion Performed By Go-Jek Indonesia and C2C Marketplaces on Buyers' Purchasing Decision

INTERNATIONAL CONFERENCE ON ECONOMICS, BUSINESS AND ECONOMIC EDUCATION 2018 (ICE-BEES 2018)

Pages 541–552 • Tusyanah., I Maftukhah, F Dyah Rahmawati, A Fadlilah

158 DOWNLOADS

[Download fulltext](#)

Determining the Appropriate Demand Forecasting Using Time Series Method: Study Case at Garment Industry in Indonesia

INTERNATIONAL CONFERENCE ON ECONOMICS, BUSINESS AND ECONOMIC EDUCATION 2018 (ICE-BEES 2018)

Pages 553–564 • A Yunishafira

375 DOWNLOADS

[Download fulltext](#)

Analysis Criteria and Indicator Estimation Smart City in South Tangerang City, Banten Province (An Analysis through Smart Economy)

INTERNATIONAL CONFERENCE ON ECONOMICS, BUSINESS AND ECONOMIC EDUCATION 2018 (ICE-BEES 2018)

Pages 565–615 • I Lubis, A Yani Nasution, M Safii

162 DOWNLOADS

[Download fulltext](#)

Spiritual Capital in Entrepreneurial Spirit of Dayak Youth

INTERNATIONAL CONFERENCE ON ECONOMICS, BUSINESS AND ECONOMIC EDUCATION 2018 (ICE-BEES 2018)

Pages 616–624 • H A (Reni) Tjondro Sugianto, P Vasantan

63 DOWNLOADS

[Download fulltext](#)

Financial Behaviour and Financial Literacy on Traders in Border Areas of Indonesia

INTERNATIONAL CONFERENCE ON ECONOMICS, BUSINESS AND ECONOMIC EDUCATION 2018 (ICE-BEES 2018)

Pages 625–632 • J Ayu Fridayani, Y Damas Sadewo

109 DOWNLOADS

[Download fulltext](#)

Effectiveness of New Product Development on Mat Creative Industry

INTERNATIONAL CONFERENCE ON ECONOMICS, BUSINESS AND ECONOMIC EDUCATION 2018 (ICE-BEES 2018)

Pages 633–653 • P Eko Prasetyo, Rusdarti., Y Aulia Rahman

220 DOWNLOADS

[Download fulltext](#)

Family Ownership and Firm Performance in Indonesia

INTERNATIONAL CONFERENCE ON ECONOMICS, BUSINESS AND ECONOMIC EDUCATION 2018 (ICE-BEES 2018)

Pages 654–662 • Juanda., Jalaluddin.

54 DOWNLOADS

[Download fulltext](#)

Consumer Innovativeness: Literature Review and Measurement Scales

INTERNATIONAL CONFERENCE ON ECONOMICS, BUSINESS AND ECONOMIC EDUCATION 2018 (ICE-BEES 2018)

Pages 663–672 • R Kuswati, Irmawati.

295 DOWNLOADS

[Download fulltext](#)

Integration of Agricultural Research Planning and Its Implementation to Improve Food Security Through Development of Agricultural Research Information System (SIPP)

INTERNATIONAL CONFERENCE ON ECONOMICS, BUSINESS AND ECONOMIC EDUCATION 2018 (ICE-BEES 2018)

Pages 673–679 • S Dian Wisika Prajanti, S Wilonoyudho, F Ahmadi, S Oktavilia

73 DOWNLOADS

[Download fulltext](#)

Disparities Analysis of Employment - A Dynamic Shift Share Approached

INTERNATIONAL CONFERENCE ON ECONOMICS, BUSINESS AND ECONOMIC EDUCATION 2018 (ICE-BEES 2018)

Pages 680–689 • L Rita Indrawati, R Retno Sugiharti

62 DOWNLOADS

[Download fulltext](#)

The Effect of Mobile Learning Benefits Perception in Supporting Entrepreneurship Apprenticeships Program on Students Entrepreneurship Intention

INTERNATIONAL CONFERENCE ON ECONOMICS, BUSINESS AND ECONOMIC EDUCATION 2018 (ICE-BEES 2018)

Pages 690–712 • Hendrajaya.

45 DOWNLOADS

[Download fulltext](#)

Action Research of Holistic Conservation in Rawa Pening Fertilizer Engineering Technology and Lightweight Concrete By Academic-Business-Government-Community (ABGC) Synergy Approach

INTERNATIONAL CONFERENCE ON ECONOMICS, BUSINESS AND ECONOMIC EDUCATION 2018 (ICE-BEES 2018)

Pages 713–718 • S M Endang, S Stanislaus, Fafurida .

67 DOWNLOADS

[Download fulltext](#)

Feasibility Implementation E-Learning Based on CMS Wordpress for Professional Ethics

INTERNATIONAL CONFERENCE ON ECONOMICS, BUSINESS AND ECONOMIC EDUCATION 2018 (ICE-BEES 2018)

Pages 719–730 • M S Supriyadi, H Yanto

104 DOWNLOADS

[Download fulltext](#)

Development of Blended Learning Model Based on Constructivism of Conservation Value

INTERNATIONAL CONFERENCE ON ECONOMICS, BUSINESS AND ECONOMIC EDUCATION 2018 (ICE-BEES 2018)

Pages 731–746 • N Farliana, Widiyanto ., K Budi Mulyono

55 DOWNLOADS

[Download fulltext](#)

Influence of Regional Financial Responsibility, Degree of Fiscal Desentralization and Level Financing Level to Allocation of Capital Government Regency / Central Java City

INTERNATIONAL CONFERENCE ON ECONOMICS, BUSINESS AND ECONOMIC EDUCATION 2018 (ICE-BEES 2018)

Pages 747–759 • Irwanto ., K Hendra Titisari, Y Chomsatu

56 DOWNLOADS

[Download fulltext](#)

Analysis of the Determinants Competition Oligopoly Market Telecommunication Industry in Indonesia

INTERNATIONAL CONFERENCE ON ECONOMICS, BUSINESS AND ECONOMIC EDUCATION 2018 (ICE-BEES 2018)

Pages 760–770 • R Maisyarah

205 DOWNLOADS

[Download fulltext](#)

Factors Influencing Turnover Intention in a Malaysian Manufacturing Company

INTERNATIONAL CONFERENCE ON ECONOMICS, BUSINESS AND ECONOMIC EDUCATION 2018 (ICE-BEES 2018)

Pages 771–787 • N Ezaili Alias, N Haziqah Rohmanan, S Ismail, W-L Koe, R Othman

490 DOWNLOADS

[Download fulltext](#)

A Suggested Model for Studying Technopreneurial Intention in Malaysia

INTERNATIONAL CONFERENCE ON ECONOMICS, BUSINESS AND ECONOMIC EDUCATION 2018 (ICE-BEES 2018)

Pages 788–796 • W-L Koe, N Ezaili Alias, S Ismail, M Halim Mahphoth

142 DOWNLOADS

[Download fulltext](#)

Model of the Increase of Accurate Computer Learning Achievement on Islamic Banking and Accounting Students Program

INTERNATIONAL CONFERENCE ON ECONOMICS, BUSINESS AND ECONOMIC EDUCATION 2018 (ICE-BEES 2018)

Pages 797–810 • S Mutiatul Khasanah, H Yanto

53 DOWNLOADS

[Download fulltext](#)

The Influence of Financial Attitude, Financial Socialization, and Financial Experience to Financial Management Behavior with Financial Literacy as the Mediation Variable

INTERNATIONAL CONFERENCE ON ECONOMICS, BUSINESS AND ECONOMIC EDUCATION 2018 (ICE-BEES 2018)

Pages 811–832 • M Ameliawati, R Setiyani

2589 DOWNLOADS

[Download fulltext](#)

The Role of Tobacco Agriculture and Manufacturing in Temanggung Regency: An Input-Output Perspective

INTERNATIONAL CONFERENCE ON ECONOMICS, BUSINESS AND ECONOMIC EDUCATION 2018 (ICE-BEES 2018)

Pages 833–840 • F Firmansyah, S Otavilia, R Habibah Yusfi

67 DOWNLOADS

[Download fulltext](#)

The Effect of Procedural Justice on Managerial Performance Through Budget Participation at Pt. Perkebunan Nusantara (PERSERO) in North Sumatera

INTERNATIONAL CONFERENCE ON ECONOMICS, BUSINESS AND ECONOMIC EDUCATION 2018 (ICE-BEES 2018)

[Pages 841–849 • L Wardani Harahap](#)

[43 DOWNLOADS](#)

[Download fulltext](#)

Sustainable Development of Poverty Impacts in Industrial Region with Local Competency Approach in Central Java Province

[INTERNATIONAL CONFERENCE ON ECONOMICS, BUSINESS AND ECONOMIC EDUCATION 2018 \(ICE-BEES 2018\)](#)

[Pages 850–859 • L Antero Da Costa, P S Susilo Parmansyah](#)

[47 DOWNLOADS](#)

[Download fulltext](#)

The Projection Model As an Early Warning of Food Price Commodity Fluctuation

[INTERNATIONAL CONFERENCE ON ECONOMICS, BUSINESS AND ECONOMIC EDUCATION 2018 \(ICE-BEES 2018\)](#)

[Pages 860–868 • A Pujjati, S Oktavilia, N Damayanti](#)

[65 DOWNLOADS](#)

[Download fulltext](#)

Analysis of Sugar-Free Claimed Beverages and Its Potential Customers

[INTERNATIONAL CONFERENCE ON ECONOMICS, BUSINESS AND ECONOMIC EDUCATION 2018 \(ICE-BEES 2018\)](#)

[Pages 869–883 • J Sunarisa](#)

[110 DOWNLOADS](#)

[Download fulltext](#)

Sweetened Packaged Beverage Purchase Intention and Behavior based on Subjective Norm, Perceived Risk, and Perceived Value

[INTERNATIONAL CONFERENCE ON ECONOMICS, BUSINESS AND ECONOMIC EDUCATION 2018 \(ICE-BEES 2018\)](#)

[Pages 884–902 • M Khofanda, P Fajarindra Belgiawan](#)

[110 DOWNLOADS](#)

[Download fulltext](#)

Poverty Curse Hypothesis of Resource-Rich Regions, a Development Paradox in Indonesia

[INTERNATIONAL CONFERENCE ON ECONOMICS, BUSINESS AND ECONOMIC EDUCATION 2018 \(ICE-BEES 2018\)](#)

[Pages 903–914 • S Adi Wibowo, P S Susilo Parmansyah](#)

[79 DOWNLOADS](#)

[Download fulltext](#)

The Effect of Trust and Brand Image to Repurchase Intention in Online Shopping

INTERNATIONAL CONFERENCE ON ECONOMICS, BUSINESS AND ECONOMIC EDUCATION 2018 (ICE-BEES 2018)

Pages 915–928 • H Riki Wijayajaya, S R Tri Astuti

1030 DOWNLOADS

[Download fulltext](#)

Online Corporate Social Responsibility on Developing Countries

INTERNATIONAL CONFERENCE ON ECONOMICS, BUSINESS AND ECONOMIC EDUCATION 2018 (ICE-BEES 2018)

Pages 929–944 • I Virdasari, N Soewarno, Isnalita .

57 DOWNLOADS

[Download fulltext](#)

Detecting Fraudulent Financial Statement Using Fraud Triangle: Capability as Moderating Variable

INTERNATIONAL CONFERENCE ON ECONOMICS, BUSINESS AND ECONOMIC EDUCATION 2018 (ICE-BEES 2018)

Pages 945–956 • L Surjaatmaja

233 DOWNLOADS

[Download fulltext](#)

Supply-chain Analysis and Commodity Marketing of Chilli in Subosukowonosraten

INTERNATIONAL CONFERENCE ON ECONOMICS, BUSINESS AND ECONOMIC EDUCATION 2018 (ICE-BEES 2018)

Pages 957–973 • Soepatini ., A Nuryulia P, M Isa, Syamsudin .

109 DOWNLOADS

[Download fulltext](#)

The Influence of Innovation Attributes and Level of Trust on Mobile Banking Adoption

INTERNATIONAL CONFERENCE ON ECONOMICS, BUSINESS AND ECONOMIC EDUCATION 2018 (ICE-BEES 2018)

Pages 974–988 • E Dian Purwati, N Soewarno, Isnalita .

127 DOWNLOADS

[Download fulltext](#)

Improvement of Student Critical Thinking About Using Discussion Learning

INTERNATIONAL CONFERENCE ON ECONOMICS, BUSINESS AND ECONOMIC EDUCATION 2018 (ICE-BEES 2018)

Pages 989–1000 • L Maryani, M Wahyudin, V Aryanto Sopiansah

71 DOWNLOADS

[Download fulltext](#)

The Relationship between Organizational Politics, Job Satisfaction and Turnover Intention in the Maritime-Related Agencies in the East Coast of Peninsular Malaysia

INTERNATIONAL CONFERENCE ON ECONOMICS, BUSINESS AND ECONOMIC EDUCATION 2018 (ICE-BEES 2018)

Pages 1001–1013 • J Mohd Yusof, S Nur 'Atikah Zulkiffli, S Falindah Padlee, N Ayuni Yusof

958 DOWNLOADS

[Download fulltext](#)

Factors that Affect the Economic Participation of Female Labor with Married Status in Central Java (Analysis of Sakernas Data 2017)

INTERNATIONAL CONFERENCE ON ECONOMICS, BUSINESS AND ECONOMIC EDUCATION 2018 (ICE-BEES 2018)

Pages 1014–1023 • K Caroline

63 DOWNLOADS

[Download fulltext](#)

Village Community Participation Model in Village Funds Management to Exteriorize the Accountability

INTERNATIONAL CONFERENCE ON ECONOMICS, BUSINESS AND ECONOMIC EDUCATION 2018 (ICE-BEES 2018)

Pages 1024–1038 • N Susilowati, A Herdiani, R Widhiastuti

128 DOWNLOADS

[Download fulltext](#)

Prototype Development of Interactive Multimedia Manual and Electronic Recordkeeping Simulator for E-Archive Learning

INTERNATIONAL CONFERENCE ON ECONOMICS, BUSINESS AND ECONOMIC EDUCATION 2018 (ICE-BEES 2018)

Pages 1039–1051 • T Novi Ashari, H Pramusinto

92 DOWNLOADS

[Download fulltext](#)

Analysis of Financial and Non Financial Factors to Revaluation of Fixed Asset

INTERNATIONAL CONFERENCE ON ECONOMICS, BUSINESS AND ECONOMIC EDUCATION 2018 (ICE-BEES 2018)

Pages 1052–1066 • L Ayu Surgawi, B Solikhah

222 DOWNLOADS

[Download fulltext](#)

The Implementation of Interactive Media for Learning in Blended Learning on Business Ethics

INTERNATIONAL CONFERENCE ON ECONOMICS, BUSINESS AND ECONOMIC EDUCATION 2018 (ICE-BEES 2018)

Pages 1067–1081 • A Santoso, S Lestari, N Susilowati, Tusyanah

58 DOWNLOADS

[Download fulltext](#)

Study of Management Diversity Based on Biographical Characteristics in Higher Education

INTERNATIONAL CONFERENCE ON ECONOMICS, BUSINESS AND ECONOMIC EDUCATION 2018 (ICE-BEES 2018)

Pages 1082–1090 • A Rustiana, W Rahmaningtyas

128 DOWNLOADS

[Download fulltext](#)

Analysis of the Shifts of Potential and Leading Sectors in Kaimana Regency Economy in the Period of 2010–2015

INTERNATIONAL CONFERENCE ON ECONOMICS, BUSINESS AND ECONOMIC EDUCATION 2018 (ICE-BEES 2018)

Pages 1091–1105 • Y P Rahayu, M R Maspaitella, K I Tewernusa

70 DOWNLOADS

[Download fulltext](#)

An Empirical Study of Service Quality and Customer Satisfaction of Malaysian Air Passenger

INTERNATIONAL CONFERENCE ON ECONOMICS, BUSINESS AND ECONOMIC EDUCATION 2018 (ICE-BEES 2018)

Pages 1106–1115 • M Halim Mahphoth, W-L Koe, R Krishnan, A Erfani Abd Ghani, S Ismail

378 DOWNLOADS

[Download fulltext](#)

Crowdfunding Among Event Entrepreneurs: A Conceptual Paper

INTERNATIONAL CONFERENCE ON ECONOMICS, BUSINESS AND ECONOMIC EDUCATION 2018 (ICE-BEES 2018)

Pages 1116–1124 • M Hafizi Zamri, F A Mohamad Basir, D Anak Agam, M Daim Darson

66 DOWNLOADS

[Download fulltext](#)

The Effect of Investment and Export on Manufacturing Industry in Indonesia

INTERNATIONAL CONFERENCE ON ECONOMICS, BUSINESS AND ECONOMIC EDUCATION 2018 (ICE-BEES 2018)

Pages 1125–1140 • T A Ramadhani, M Aulia Rachman, Firmansyah., F X Sugiyanto

122 DOWNLOADS

[Download fulltext](#)

Good Environmental Governance through the Innovation of Solid Waste Management in the Community of Gili Ketapang Island Kabupaten Probolinggo

INTERNATIONAL CONFERENCE ON ECONOMICS, BUSINESS AND ECONOMIC EDUCATION 2018 (ICE-BEES 2018)

Pages 1141–1159 • R D A Pangesti Mulyono

69 DOWNLOADS

[Download fulltext](#)

Psychological Mechanism Explaining the Effect of HR Practices Towards Employee Performance (A Study in Public Higher Education)

INTERNATIONAL CONFERENCE ON ECONOMICS, BUSINESS AND ECONOMIC EDUCATION 2018 (ICE-BEES 2018)

Pages 1160–1178 • S Martono, N Ariani Wulansari, V Wiratno Putri, M Khoiruddin

72 DOWNLOADS

[Download fulltext](#)

Employee Performance Measurement Development Based on Green HRM Indicators

INTERNATIONAL CONFERENCE ON ECONOMICS, BUSINESS AND ECONOMIC EDUCATION 2018 (ICE-BEES 2018)

Pages 1179–1194 • N Ariani Wulansari, R Setyo Witiastuti, S Ridloah

332 DOWNLOADS

[Download fulltext](#)

Impact of Destination Image, Service Quality, and Location on Visitor Satisfaction through Visitor Decision on Global Waterboom in Pati Central Java

INTERNATIONAL CONFERENCE ON ECONOMICS, BUSINESS AND ECONOMIC EDUCATION 2018 (ICE-BEES 2018)

Pages 1195–1207 • R Jessica Manurung, Wahyono.

503 DOWNLOADS

[Download fulltext](#)

New Characteristics of Rural Women's Economic Participation in Shaanxi, China

INTERNATIONAL CONFERENCE ON ECONOMICS, BUSINESS AND ECONOMIC EDUCATION 2018 (ICE-BEES 2018)

Pages 1208–1229 • M Yang, A Rae, M Young

54 DOWNLOADS

[Download fulltext](#)

Reward Information System: Integrated Strategy to Control Program Effectiveness

INTERNATIONAL CONFERENCE ON ECONOMICS, BUSINESS AND ECONOMIC EDUCATION 2018 (ICE-BEES 2018)

Pages 1230–1241 • S Martono, N Ariani Wulansari, S Wartini

60 DOWNLOADS

[Download fulltext](#)

Intellectual Capital Influence on Financial Performance and Company Value

INTERNATIONAL CONFERENCE ON ECONOMICS, BUSINESS AND ECONOMIC EDUCATION 2018 (ICE-BEES 2018)

Pages 1242–1254 • A Ardiansari, M Nugrahaini, V Wiratno Putri

76 DOWNLOADS

[Download fulltext](#)

A Constructive Model of MSMEs' Entrepreneurial Success Based on Green Management System and Psychological Capital in Semarang City

INTERNATIONAL CONFERENCE ON ECONOMICS, BUSINESS AND ECONOMIC EDUCATION 2018 (ICE-BEES 2018)

Pages 1255–1270 • V Wiratno Putri, S Ridloah, A Rafinda

67 DOWNLOADS

[Download fulltext](#)

Learning Management in Police Academy Educational Institutes and Training

INTERNATIONAL CONFERENCE ON ECONOMICS, BUSINESS AND ECONOMIC EDUCATION 2018 (ICE-BEES 2018)

Pages 1271–1280 • T Widada, A Slamet, T Sumaryanto Florentinus, S Martono





34 DOWNLOADS

[Download fulltext](#)

Contact

Email publishing@knowledgee.com
Phone +971 4 4227043
Address Knowledge E
Office 4401-04
Jumeirah Bay X2 Tower
Jumeirah Lakes Towers (JLT)
P.O. Box 488239
Dubai, UAE

Follow us

 [@KnEGlobal](#)
 facebook.com/KnowledgeEGlobal
 [Youtube](#)
 [KnowledgeEGlobal](#)

[Find out more about Knowledge E from our corporate page](#)



Conference Paper

Is More Always Better? An Empirical Investigation of the CAPM and the Fama-French Three-factor Model in Indonesia

Bambang Sutrisno and Rifzaldi Nasri

Universitas Muhammadiyah Jakarta

Abstract

This study investigates the performance of the CAPM and the Fama-French three-factor model in Indonesia. This research employs time-series regression with monthly data from 2005 to 2015. The results reveal that the Fama-French three-factor model performs better than the CAPM in describing the excess return of stock portfolios in Indonesia. This result is robust to the equally-weighted method and the impact of the global financial crisis. Although the Fama-French three-factor model is superior to the CAPM, the results indicate that there are other factors to consider in determining asset pricing models that better capture stock return variations in the Indonesian stock market. This research implies that the investors should consider Fama-French factors when making their investment decisions. Furthermore, the investors should evaluate another factor impact the average returns.

Keywords: Asset pricing, CAPM, Three-factor model, Size factor, Book-to-market factor, JEL Code: G12

Corresponding Author:
Bambang Sutrisno
bsutrisno.umj@gmail.com

Received: 7 August 2018
Accepted: 15 September 2018
Published: 22 October 2018

Publishing services provided by
Knowledge E

© Bambang Sutrisno and
Rifzaldi Nasri. This article is
distributed under the terms of
the [Creative Commons](#)

[Attribution License](#), which
permits unrestricted use and
redistribution provided that the
original author and source are
credited.

Selection and Peer-review
under the responsibility of the
ICE-BEES 2018 Conference
Committee.

1. Introduction

Sharpe (1964), Lintner (1965), Mossin (1966), and Black (1972) introduced the Capital Asset Pricing Model (CAPM). It contributes significantly to the understanding of risk relationships with returns for academia and practitioners. The asset return in the CAPM is determined only by systematic risk, i.e., beta. The expected return on risky assets is predicted to be positively related to beta. The primary purpose of CAPM is to determine the required rate of return on investment.

Initially, empirical tests support the argument that beta is the only predictor of cross-sectional differences in stock portfolio returns [15]. However, later empirical findings

OPEN ACCESS

suggest that not only the beta can explain stock returns, but other factors can explain stock returns variation and eventually develop other asset pricing models. A number of studies have found that firm characteristics may be a significant explanatory factor on average returns, such as firm size (Banz, 1981; [31]), earnings to price ratio [2], leverage [3], or book-to-market equity ratio [8, 32, 34].

Encouraged by the above findings, an article that has a significant impact on systematic risk validity as a measure of stock risk is Fama and French (1992). They generate two primary results. Firstly, when the beta is allowed to vary unrelated to size, the positive linear relationship between beta and return will disappear as opposed to CAPM prediction. Secondly, because the beta is not good at explaining returns, Fama and French (1992) compare the explanatory power of size, leverage, earnings to price ratio, and book-to-market equity ratio. Fama and French (1992) conclude that the size and the ratio of book-to-market equity are the variables that have the most substantial relationship with the return and can explain the cross-section of the average stock return well. However, some researchers assume that the results of Fama and French research occur due to data snooping [6, 25].

In their subsequent research, Fama and French (1993) try to develop the previous study using a time-series regression approach to US stock data for the period 1963 to 1991. Fama and French (1993) propose a three-factor asset pricing model. The three-factor model includes market factor (excess market return), size factor (SMB), and book-to-market factor (HML). The Fama and French's study is interesting because it can show that the premium return associated with size and the book-to-market ratio is compensated for risk, in line with the spirit of the Intertemporal Capital Asset Pricing Model [27].

Subsequent studies show that a three-factor model can explain the cross-section of stock returns well. These include Fama and French (1996, 1998), Liew and Vassalou (2000), Griffin and Lemmon (2002), Lettau and Ludvigson (2001), and Petkova (2006). Therefore, the three-factor model of Fama and French has become a reference model in asset pricing literature.

Some previous studies compared the performance of the CAPM and the Fama-French three-factor model. Gaunt (2004) in Australia, Bhatnagar and Ramlogan (2012) in UK, Mio and Yi (2013) in US document that the Fama-French three-factor model performs better than the CAPM. According to those results, this study examines further the performance of the CAPM and the Fama-French three-factor model in a developing country, namely Indonesia.

2. Literature Review

2.1. Capital asset pricing model

CAPM is a theory-based model. The coefficient of beta in CAPM indicates market sensitivity. Beta shows how the systematic risk level of the market. CAPM is based on a model developed by Markowitz (1952). This theory explains the relationship between risk and the rate of return on the assets demanded when those assets are in a well-diversified portfolio. Based on the Markowitz model, each investor is assumed to diversify the portfolio and choose an optimal portfolio based on its preference.

Mathematically, the CAPM equation is:

$$R_{it} - R_{ft} = a_i + b_i (R_{mt} - R_{ft}) + e_{it} \quad (1)$$

where R_{it} is the return of securities or portfolio i for period t , R_{ft} is the risk-free rate for period t , R_{mt} is market portfolio return for period t , and e_{it} is error term of securities or portfolio i of period t .

Many studies support CAPM and do not support CAPM. Prior research that supports CAPM such as Graham and Harvey (2001) suggest that 73.5% of CFOs uses CAPM to estimate the cost of equity. Brounen et al. (2004) used a similar survey of 313 companies in Europe and about 45% used CAPM. Black et al. (1972) tested CAPM employing the return of cross-section and time-series. They conclude that the intercept is near zero. The results documented that the relationship between the average of portfolio returns and beta is linear. The following year, Fama and MacBeth (1973) researched on the New York Stock Exchange between 1926 and 1968. Fama and MacBeth (1973) claim that their study supports CAPM. They found that there is a linear relationship between the average returns and beta.

The research against CAPM begins with Roll criticism (1977) who argues that CAPM cannot be tested unless the market portfolio of all assets is used in empirical tests. Basu (1977) also shows exciting anomalies from CAPM. Basu is the first to test the idea that variables associated with values can explain CAPM violations. Basu (1977) found a significant positive relationship between earnings to price ratio and the average return for US stocks that cannot be described by CAPM. Banz (1981) criticizes CAPM by showing that size can explain better than beta about cross-sectional variation in average returns on some essential assets. Bhandari (1988) also found an anomaly where stock returns with leverage (debt to equity ratio).

2.2. Fama-french three-factor model

Banz (1981) has initiated research and states the size is inversely related to expected return. Fama and French (1992) evaluated beta, size, and the book-to-market ratio by testing all stock return data from NYSE, AMEX, and NASDAQ, with the period 1962-1989. But they do not include financial companies as data in research. The methodology used by Fama and French in determining the value of beta is identical to the methodology of Fama and MacBeth (1973), which is a cross-sectional regression by controlling the size and book-to-market variables as a way of selecting samples. The conclusion of Fama and French (1992) research is that size and book-to-market equity can capture cross-sectional variation in stock returns.

The three-factor model of Fama-French (1993) can be expressed in the following model:

$$R_{it} - R_{ft} = a_i + b_i (R_{mt} - R_{ft}) + s_i SMB_t + h_i HML_t + e_{it} \quad (2)$$

where R_{it} is return of securities or portfolio i for period t , R_{ft} is the risk-free rate for period t , R_{mt} is market portfolio return for period t , SMB_t is size factor (Small Minus Big) for period t , HML_t is book-to-market factor (High Minus Low) for period t , and e_{it} is error term of securities or portfolio i of period t .

The Fama-French three-factor model is the extended version of the CAPM, by adding size (SMB) and book-to-market (HML) factors into the CAPM. SMB is a risk measure of the company, where the stock of small companies is expected to be more sensitive. On the other hand, HML represents a higher risk exposure for stocks of firms with high book value-to-market ratios (value stocks) and lower for firm stocks with low book-to-market ratios (growth stocks).

3. Research Methods

3.1. Data

Data employed in this study are secondary data which collected from the Datastream database. The use of the Datastream database helps with survivorship bias because Datastream samples include active and non-active companies [7]. The research period is July 2005-June 2015. This study uses monthly data. The data used in this study include the stock closing price, the number of shares outstanding, the Indonesian capital market Composite Stock Price Index, the book value of equity, and the risk-free interest rate using monthly data of 90 days of Bank Indonesia Certificates.

The criteria for determining the sample follow Fama and French (1992, 1993). This study excludes stocks that fall within the financial sector. This study excludes stocks in the financial sector because high leverage is common to financial firms, but that does not apply to non-financial companies, where high leverage would indicate financial difficulties. This study also drops stocks with negative equity because negative equity may also suggest that a company is experiencing financial difficulties.

4. Research Variables

The independent variables in this research are asset pricing factors that include market, size (SMB), and book-to-market (HML). The calculation of return of each asset pricing factor is determined using the value-weighted method. Explanation of each factor is described as follows.

1. Market factor ($R_m - R_f$)

Market factor represents the difference of each market's return on the risk-free interest rate.

2. Size factor (SMB)

SMB (*Small Minus Big*) is intended to illustrate the risk factors associated with firm size. SMB represents the difference of each month of average returns on three portfolios over small share capitalization with average returns on three portfolios with large share capitalization. SMB calculation is formulated as follows.

$$SMB = \frac{(Small\ Value + Small\ Neutral + Small\ Growth)}{3} - \frac{(Big\ Value + Big\ Neutral + Big\ Growth)}{3} \quad (3)$$

3. Book-to-market factor (HML)

HML (High Minus Low) is meant to capture the risk factors associated with the book-to-market ratio. HML is the monthly difference between the average returns on two portfolios that have high book-to-market ratios with average returns on two portfolios with low book-to-market ratios. The HML calculation uses the following formula.

$$HML = \frac{(Small\ Value + Big\ Value)}{2} - \frac{(Small\ Growth + Big\ Growth)}{2} \quad (4)$$

This study calculates the excess return from portfolio 25 Size-B/M as the dependent variable. Portfolio 25 Size-B/M, formed at the end of every June, is the interaction of

five portfolios formed on the size (market capitalization) with five portfolios formed on the book-to-market ratio. Size for June of year t is the multiplication of stock price in June year t with the number of shares outstanding in June of year t . B/M for June in year t is the book value of equity at the end of fiscal year $t-1$ on market capitalization in December year $t-1$. The calculation of portfolio return using the value-weighted method. The portfolio will be rebalanced annually at the end of June year t .

5. Empirical Models

The empirical models used in this study are the CAPM and the Fama-French three-factor model, as described below.

$$R_{pt} - R_{ft} = a_p + b_p (R_{mt} - R_{ft}) + e_{pt} \quad (5)$$

$$R_{pt} - R_{ft} = a_p + b_p (R_{mt} - R_{ft}) + s_p SMB_t + h_p HML_t + e_{pt} \quad (6)$$

where $R_{pt} - R_{ft}$ is portfolio excess return, $R_{mt} - R_{ft}$ is market factor (market excess return), SMB_t is size factor, HML_t is value factor, and e_{pt} is error term.

This research employs time-series regression with ordinary least square estimation method (OLS). Before conducting the multiple regression testing, this study applies stationarity test.

6. Comparison of Asset Pricing Models

This study uses several criteria in comparing the CAPM and the Fama-French three-factor model in Indonesia. Following Merton (1973), a well-estimated asset pricing model produces an insignificant intercept. This study tested this by computing the F-statistic of the GRS test [17]. The formula for calculating the GRS test is as follows.

$$GRS = \left(\frac{T}{N} \right) \left(\frac{T-N-L}{T-L-1} \right) \left[\frac{\alpha' \Sigma^{-1} \alpha}{1 + \mu' \Omega^{-1} \mu} \right] \sim F(N, T-N-L) \quad (7)$$

where T is the number of observations, N is the number of described portfolios, L is the number of explanatory factors, α is the vector of the intercept of regression, Σ is the covariance matrix of the residual of regression, μ is the vector of the mean of explanatory, and Ω is the covariance matrix of explanatory factors. The null hypothesis states that all the regression intercepts are zero, GRS test statistics has the F distribution with degrees of freedom N and $T-N-L$.

Following the recommendation of Lewellen et al. (2010), this study also calculates Sharpe Ratio (SR (α)). The formula for calculating Sharpe Ratio is as follows.

$$SR(\alpha) = (\alpha' S^{-1} \alpha)^{1/2} \quad (8)$$

where α is the column vector of 25 regression intercepts produced by each model when applying the Size-B/M portfolio, and S is the covariance matrix of the residual regression. The smaller the Sharpe Ratio value, the better the asset pricing model. This study also compares the average adjusted R^2 , the mean absolute value of the intercept, and the average standard error of the intercept to indicate which model is better.

7. Robustness Tests

Robustness checks need to be done to see if the regression estimation result using the value-weighted method is consistent with the different techniques. We conduct two robustness tests. First, we employ the equally-weighted method in calculating the asset pricing factors and excess stock returns of the 25 Size-B/M portfolios. Second, we address the impact of the 2007-2009 financial crisis on the two empirical models. We construct a dummy variable *Crisis* which equals one during the 2007-2009 period and zero otherwise.

8. Results and Discussion

8.1. Summary statistics

The statistical summary for each independent variable (asset pricing factor) during the period of July 2005 - June 2015 (120 observations) is presented in Table 1. The monthly average of market factor ($R_m - R_f$) is 0.69%, the average of the size factor (SMB) is 0.06% per month, and the average of the book-to-market (HML) factor per month is 0.01%. All factors have positive average values. It means that that the market, size, and book-to-market factors have the premium to compensate for risk.

The correlation between factors is shown in Table 2. The size factor is negatively correlated with the market factor, while the book-to-market factor is positively correlated with the market factor. The book-to-market factor is negatively correlated with the size factor.

TABLE 1: Summary statistics for monthly factor percent returns.

	$R_m - R_f$	SMB	HML
Mean	0.69	0.06	0.01
Median	1.33	0.04	0.01
Maximum	19.37	1.40	3.90
Minimum	-32.19	-0.72	-1.50
Std. dev.	6.42	0.28	0.56

TABLE 2: Correlation between asset pricing factors.

	$R_m - R_f$	SMB	HML
$R_m - R_f$	1	-0.25	0.14
SMB	-0.25	1	-0.56
HML	0.14	-0.56	1

Table 3 shows the average monthly excess return (the excess return of the Bank Indonesia Certificates monthly interest rate) for a 25 value-weighted portfolio of independently sorted of stocks into 5 Size groups and 5 Book-to-Market groups (B/M). In each of the B/M columns of Table 4.3, the average excess return decreases from the stocks in the small market capitalization group to the stocks in the large market capitalization group. This result shows the size effect. The average relationship of return with B/M, called the value effect, is only indicated by stocks in the Size 4 group where the average excess return increases from 0.22% to 0.83%. The value effect is found to be inconsistent with the size effect.

TABLE 3: Average monthly percent excess returns for 25 Size-B/M portfolios.

	Average Excess Return				
	Low	2	3	4	5
Small	2.60	1.41	0.72	0.52	0.24
2	0.92	1.31	0.28	0.31	0.48
3	0.58	0.53	0.48	0.42	0.33
4	0.22	0.32	0.31	0.43	0.83
Big	0.10	0.19	0.31	0.60	-0.18

8.2. Regression results for the CAPM

The regression estimation results for the CAPM and the Fama-French three-factor model are shown in Table 4. Panel A describes the regression results for the CAPM. There are twenty statistically significant intercepts, while five intercepts are insignificant. These findings indicate that the CAPM cannot account for all the variations in

the excess return of the stock portfolio. In other words, there are other factors to consider in determining the right asset pricing model for the Indonesian stock market. An interesting finding is that the intercept of a large-capitalized portfolio of stocks is almost insignificant, indicating that large-cap stocks can better explain the excess return portfolio than small capitalized stocks.

All coefficients of market factors are positive, which indicate that market factors have a positive effect on the excess return of the stock portfolios. There are only two coefficients of the insignificant market factor. Market factors can capture almost all the variations of excess return of stock portfolios in Indonesia. The coefficients of market factors tend to be smaller for smaller capitalized stocks.

The adjusted values of the R^2 range from 1% to 83%. The average adjusted R^2 value for the CAPM is 18%. GRS statistics are significant at 1% level, indicating that 25 intercepts simultaneously are not equal to zero. The Sharpe ratio for the CAPM is 1.36. The average absolute values of the intercept and the average standard error of intercepts are 0.53 and 0.29, respectively.

8.3. Regression results for the Fama-french three-factor model

Panel B of Table 4 displays the regression results for the Fama-French three-factor model. There are eighteen statistically significant intercepts, while the remainder (seven intercepts) are insignificant. This result is not in line with Merton's criterion (1973), where most of the intercept of 25 portfolios are significant. The Fama-French three-factor model cannot capture all the variations of the excess return of the stock portfolio.

All coefficients of market factors are positive, indicating that market factors have the positive effect on the excess return of stock portfolios. There are only three coefficients of insignificant market factors. That is, market factors can capture almost all variations of excess return on the stock portfolios. The coefficient of market factors tends to be smaller for smaller capitalized stocks. This finding is consistent with Halliwell et al. (1999) but inconsistent with Fama and French (1993).

This study finds eleven coefficients of size factor (SMB) are statistically significant, either at the level of 1%, 5%, or 10%. That is, almost half of the SMB coefficients on the Size-B/M 25 portfolios can explain the excess return on the stock portfolios. There is no apparent pattern that can be observed from the SMB coefficients.

There are eleven coefficients of the book-to-market factor (HML) that are statistically significant. This result indicates that the HML factor can explain the excess

return on the stock portfolio almost half of the 25 Size-B/M portfolios. Similar to the coefficient of SMB, there is no clear pattern of observable HML coefficients.

The adjusted values of the R^2 range from 1% to 82%. The average adjusted R^2 for the Fama-French three-factor model is 26%. GRS statistics are significant at the 1% level, which indicates that the intercepts simultaneously are not equal to zero. Sharpe ratio for the Fama-French three-factor model is 1.33. The average absolute values of the intercept and the average standard errors of intercepts are 0.43 and 0.25, respectively.

8.4. Comparison of asset pricing models

As shown in Table 4, the average adjusted R^2 value for the Fama-French three-factor model is higher than the CAPM. This result supports the superiority of the Fama-French three-factor model. The average absolute value of the intercept and the average standard error of intercepts for the Fama-French three-factor model are lower than the CAPM. This finding also supports the superiority of the Fama-French three-factor model. When referring to GRS statistic, both models produce F-statistic which is significant at 1% level. However, the GRS statistic value for the Fama-French three-factor model is smaller than the CAPM, which may be interpreted that the Fama-French three-factor model performs better than the CAPM. The Sharpe ratio for the Fama-French three-factor model is lower than the CAPM, where these findings confirm the superiority of the Fama-French three-factor model compared with the CAPM. Overall, the results of this study prove that the Fama-French three-factor model is better than the CAPM in explaining the variation of excess return of stock portfolios in Indonesia.

8.5. Robustness tests

The first robustness check is the use of the equally-weighted method in calculating the asset pricing factors and excess return of 25 Size-B/M portfolios. Table 5 shows that the regression results using the equally-weighted method remain consistent with the main regression results. We further investigate whether the main regression results are altered by including a dummy variable *Crisis* into the two empirical models. As presented in Table 6, the performance of two asset pricing models is not impacted by the global financial crisis.

9. Conclusions

The findings show that the Fama-French three-factor model is better in explaining the excess return of stock portfolios in Indonesia than the CAPM. This finding supports Fama and French (1993). This result is robust when tested using equally method in calculating asset pricing factor and excess return portfolio. Although the Fama-French three-factor model is superior to the CAPM, the results suggest that there are other factors to consider in determining asset pricing models that better capture stock return variations in the Indonesian stock market.

The implication of this study is that the investors need to consider the three-factors of Fama-French in their investment decisions. Additionally, the investors can evaluate other risk factors affecting the average returns in Indonesia to obtain the optimal return on their investment. Future studies may search for a better asset pricing model, especially in Indonesia. Another suggestion is the use of different techniques to compare asset pricing models.

TABLE 4: Regression results for the CAPM and the Fama-French three-factor model.

B/M →	Low	2	3	4	High
Panel A: CAPM					
α					
Small	2.56*	1.33***	0.69***	0.50***	0.22***
2	0.81**	1.23**	0.24**	0.27***	0.43***
3	0.53**	0.48**	0.42**	0.38***	0.27***
4	0.16**	0.27***	0.27***	0.35**	0.69
Big	0.08***	0.09	0.14	0.07	-0.01
b					
Small	0.05	0.11*	0.05	0.04*	0.04***
2	0.15*	0.11***	0.07***	0.06***	0.08***
3	0.08**	0.07***	0.08***	0.07***	0.08***
4	0.08***	0.07***	0.07***	0.11***	0.21**
Big	0.04***	0.14**	0.25***	0.78***	0.88***
Adj R ²	0.18	$ \alpha $	0.53		
GRS	6.98***	$s(\alpha)$	0.29		
SR(α)	1.36				
Panel B: FF3					
α					
Small	2.38*	0.88***	0.49**	0.37***	0.18***
2	0.64*	0.70**	0.17**	0.22***	0.27***
3	0.51**	0.40**	0.14	0.26***	0.14

B/M →	Low	2	3	4	High
4	0.12*	0.18***	0.26***	0.29**	0.54
Big	0.08***	0.07	0.2	-0.2	-1.1
b					
Small	0.11	0.17*	0.08	0.05*	0.04***
2	0.19*	0.21***	0.08***	0.06***	0.10***
3	0.09***	0.07***	0.11***	0.08***	0.09***
4	0.09***	0.08***	0.07***	0.11***	0.14
Big	0.04***	0.15**	0.24***	0.78***	0.82***
s					
Small	2.78	6.82	2.97	1.84*	0.59***
2	2.58**	8.07*	1.11**	0.65*	2.34*
3	0.24	1.18	4.22	1.7	1.97***
4	0.68*	1.29**	0.17	0.87*	2.2
Big	0	0.3	-0.9	4.02	4.71
h					
Small	-2.37	1.13	0.44	0.63**	0.13
2	-0.51	-0.62	0.3	0.27**	1.00*
3	-0.54	0.84*	1.25	0.67**	0.75***
4	0.15	0.52**	0.17**	1.33***	7.84**
Big	0.01	-0.08	0.39	3.16	8.96***
Adj R ²	0.26	α	0.43		
GRS	6.09***	s(α)	0.25		
SR(α)	1.33				

α is the regression intercept, while *b*, *s*, and *h* are the market ($R_m - R_f$), size (SMB), and value (HML) slopes, respectively. Adj R² is the average adjusted R², GRS is the GRS statistic, SR(α) is the Sharpe ratio for the intercepts, |α| is the average absolute value of the intercepts, and s(α) is the average standard error of the intercepts. The intercepts are expressed in percent. *, **, and *** indicate significance at the 10%, 5%, and 1% levels, respectively.

TABLE 5: Equally-weighted method Table 6 Impact of the global financial crisis.

	Adj R ²	GRS	SR(α)	α	s(α)
CAPM	0.23	4.64***	0.88	0.47	0.61
FF3	0.35	4.16***	0.69	0.41	0.53
	Adj R ²	GRS	SR(α)	α	s(α)
CAPM	0.19	6.77***	1.39	0.54	0.31
FF3	0.27	6.11***	1.34	0.45	0.27

References

- [1] Basu, S. (1977). Investment performance of common stocks in relation to their price-earnings ratios: A test of the efficient market hypothesis. *Journal of Finance*, 32(3), 663-682. doi:10.2307/2326304
- [2] Basu, S. (1983). The relationship between earnings yield, market value, and return for NYSE common stocks: further evidence. *Journal of Financial Economics*, 12(1), 129-156. doi:10.1016/0304-405x(83)90031-4
- [3] Bhandari, L. C. (1988). Debt/equity ratio and expected common stock returns: Empirical evidence. *Journal of Finance*, 43(2), 507-528. doi:10.1111/j.1540-6261.1988.tb03952.x
- [4] Bhatnagar, C. S., & Ramlogan, R. (2012). The Capital Asset Pricing Model versus the three factor model: A United Kingdom perspective. *International Journal of Business and Social Research*, 2(1), 51-65. doi:10.18533/ijbsr.v2i1.204
- [5] Black, F. (1972). Capital market equilibrium with restricted borrowing. *Journal of Business*, 45(3), 444-455. doi:10.1086/295472
- [6] Black, F. (1993). Beta and Return. *Journal of Portfolio Management*, 20(1), 8-18. doi:10.3905/jpm.1993.409462
- [7] Cakici, N., Fabozzi, F. J., & Tan, S. (2013). Size, value, and momentum in emerging market stock returns. *Emerging Markets Review*, 16(C), 46-65. doi:10.1016/j.ememar.2013.03.001
- [8] Chan, L. K., Hamao, Y., & Lakonishok, J. (1991). Fundamentals and stock returns in Japan. *Journal of Finance*, 46(5), 1739-1789. doi:10.2307/2328571
- [9] Connor, G., & Sehgal, S. (2001). Tests of the Fama and French model in India. Unpublished Working Paper.
- [10] Drew, M. E., & Veeraraghavan, M. (2003). Beta, firm size, book-to-market equity and stock return. *Journal of the Asia Pasific Economy*, 8(3). doi:10.1080/13547860306289
- [11] Fama, E. F., & French, K. R. (1992). The cross-section of expected stock returns. *Journal of Finance*, 47(2), 427-465. doi:10.2307/2329112
- [12] Fama, E. F., & French, K. R. (1993). Common risk factors in the returns on stocks and bonds. *Journal of Financial Economics*, 33(1), 3-56. doi:10.1016/0304-405x(93)90023-5
- [13] Fama, E. F., & French, K. R. (1996). Multifactor explanations of asset pricing anomalies. *Journal of Finance*, 51(1), 55-84. doi:10.1111/j.1540-6261.1996.tb05202.x

- [14] Fama, E. F., & French, K. R. (1998). Value versus growth: The international evidence. *Journal of Finance*, 53(6), 1975-1999. doi:10.1111/0022-1082.00080
- [15] Fama, E. F., & MacBeth, J. D. (1973). Risk, return, and equilibrium: Empirical tests. *Journal of Political Economy*, 81(3), 607-636. doi:10.1086/260061
- [16] Gaunt, C. (2004). Size and book to market effects and the Fama French three factor asset pricing model: Evidence from the Australian stock market. *Accounting and Finance*, 44(1), 27-44. doi:10.1111/j.1467-629X.2004.00100.x
- [17] Gibbons, M. R., Ross, S. A., & Shanken, J. (1989). A test of the efficiency of a given portfolio. *Econometrica*, 57(5), 1121-1152. doi:10.2307/1913625
- [18] Graham, J. R., & Harvey, C. R. (2001). The theory and practice of corporate finance: evidence from the field. *Journal of Financial Economics*, 60(2-3), 187-243. doi:10.1016/S0304-405X(01)00044-7
- [19] Griffin, J. M., & Lemmon, M. L. (2002). Book-to-market equity, distress risk, and stock returns. *Journal of Finance*, 57(5), 2317-2336. doi:10.1111/1540-6261.00497
- [20] Halliwell, J., Heaney, J., & Sawicki, J. (1999). Size and book to market effects in Australian share markets: A time series analysis. *Accounting Research Journal*, 12(2), 122-137. Retrieved from <http://hdl.handle.net/1885/91502>
- [21] Lettau, M., & Ludvigson, S. (2001). Resurrecting the (C)CAPM: A cross-sectional test when risk premia are time-varying. *Journal of Political Economy*, 109(6), 1238-1287. doi:10.1086/323282
- [22] Lewellen, J., Nagel, S., & Shanken, J. (2010). A skeptical appraisal of asset pricing tests. *Journal of Financial Economics*, 96(2), 175-194. doi:10.1016/j.jfineco.2009.09.001
- [23] Liew, J., & Vassalou, M. (2000). Can book-to-market, size and momentum be risk factors that predict economic growth? *Journal of Financial Economics*, 57(2), 221-245. doi:10.1016/S0304-405X(00)00056-8
- [24] Lintner, J. (1965). The valuation of risk assets and the selection of risky investments in stock portfolios and capital budgets. *Review of Economics and Statistics*, 47(1), 13-37. doi:10.2307/1924119
- [25] MacKinlay, A. C. (1995). Multifactor models do not explain deviations from the CAPM. *Journal of Financial Economics*, 38(1), 3-28. doi:10.1016/0304-405X(94)00808-e
- [26] Markowitz, H. (1952). Portfolio selection. *Journal of Finance*, 7(1), 77-91. doi:10.1111/j.1540-6261.1952.tb01525.x
- [27] Merton, R. (1973). An Intertemporal Capital Asset Pricing Model. *Econometrica*, 41(5), 867-887. doi:10.2307/1913811

- [28] Miao, D., & Yi, X. (2013). Empirical researches of the capital asset pricing model and the Fama-French three-factor model on the U.S. stock market. Unpublished Working Paper, 1-36.
- [29] Mossin, J. (1966). Equilibrium in a capital asset market. *Econometrica*, 34(4), 768-783. doi: 10.2307/1910098
- [30] Petkova, R. (2006). Do the Fama-French factors proxy for innovations in predictive variables? *Journal of Finance*, 61(2), 581-612. doi:10.1111/j.1540-6261.2006.00849.x
- [31] Reinganum, M. R. (1981). Misspecification of capital asset pricing: empirical anomalies based on earnings yield and market values. *Journal of Financial Economics*, 9(1), 19-46. doi:10.1016/0304-405x(81)90019-2
- [32] Rosenberg, B., Reid, K., & Lanstein, R. (1985). Persuasive evidence of market inefficiency. *Journal of Portfolio Management*, 11(3), 9-16. doi:10.3905/jpm.1985.409007
- [33] Sharpe, W. F. (1964). Capital asset prices: A theory of market equilibrium under conditions of risk. *Journal of Finance*, 19(3), 425-442. doi:10.1111/j.1540-6261.1964.tb02865.x
- [34] Stattman, D. (1980). Book values and stock returns. *The Chicago MBA: A Journal of Selected Papers*, 4(1), 25-45.

Certificate

of Appreciation



UNIVERSITI
TEKNOLOGI
MARA



UNNES
UNIVERSITAS NEGERI SEMARANG

This is to certify that

Bambang Sutrisno

has participated as
Presenter
for the paper entitled

Is More Always Better? An Empirical Investigation of the CAPM and the Fama-French Three-factor Model in Indonesia

in the International Conference on Economics, Business and Economic Education Science (ICE-BEES) 2018
Deliberations on Business and Education Practices toward Internationalisation
Semarang, 17-18 July 2018



Drs. Heri Yanto, MBA, PhD
Dean of Fakultas Ekonomi
UNNES
UNIVERSITAS NEGERI SEMARANG

Andryan Setyadharna, PhD.
Chair of Conference