

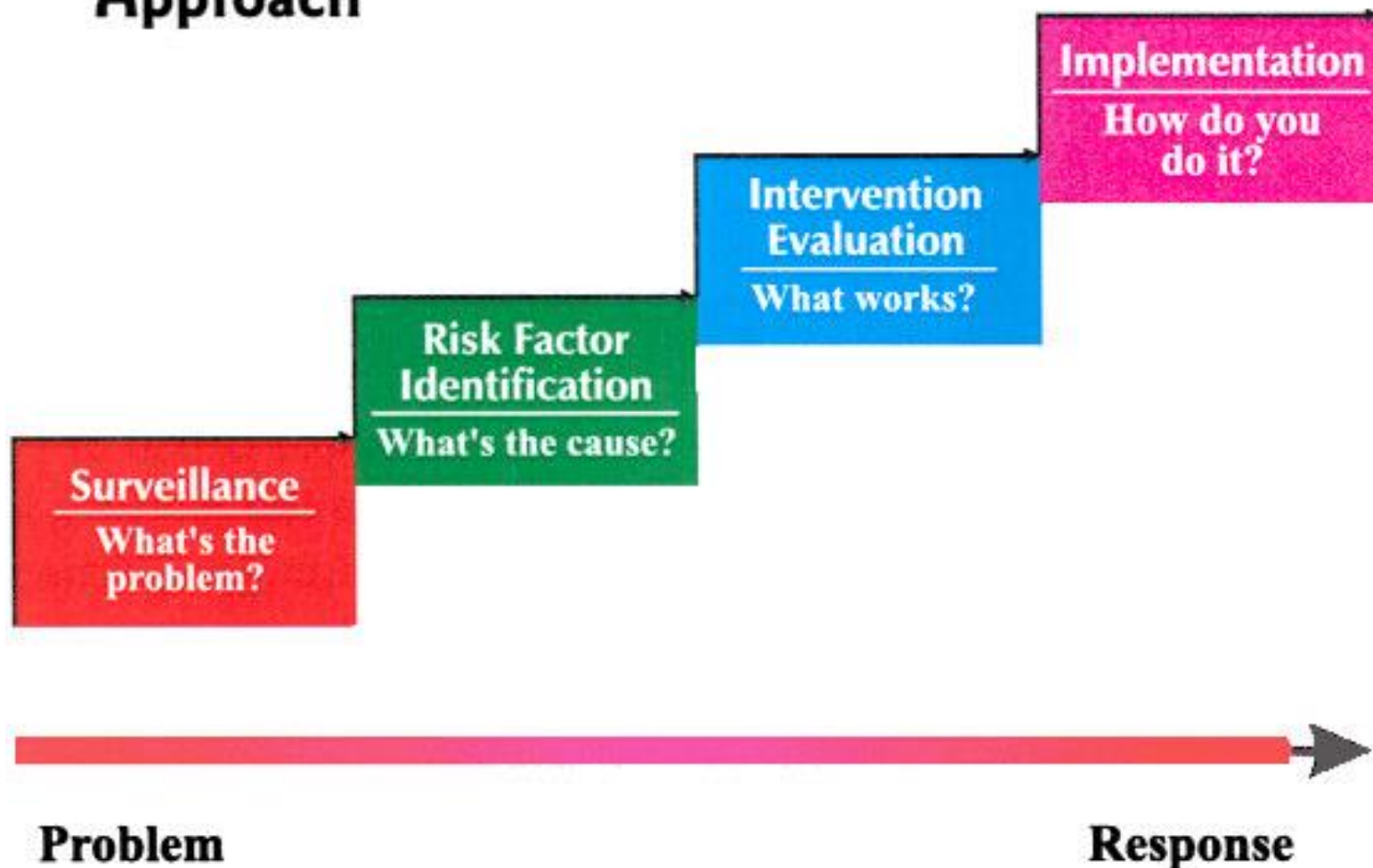


# Problem Solving Cycle

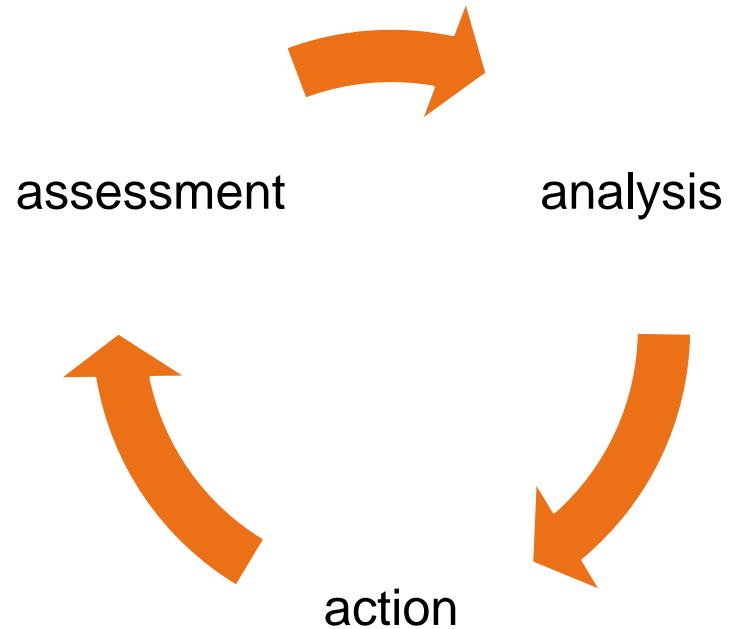
---

TIRTA PRAWITA SARI

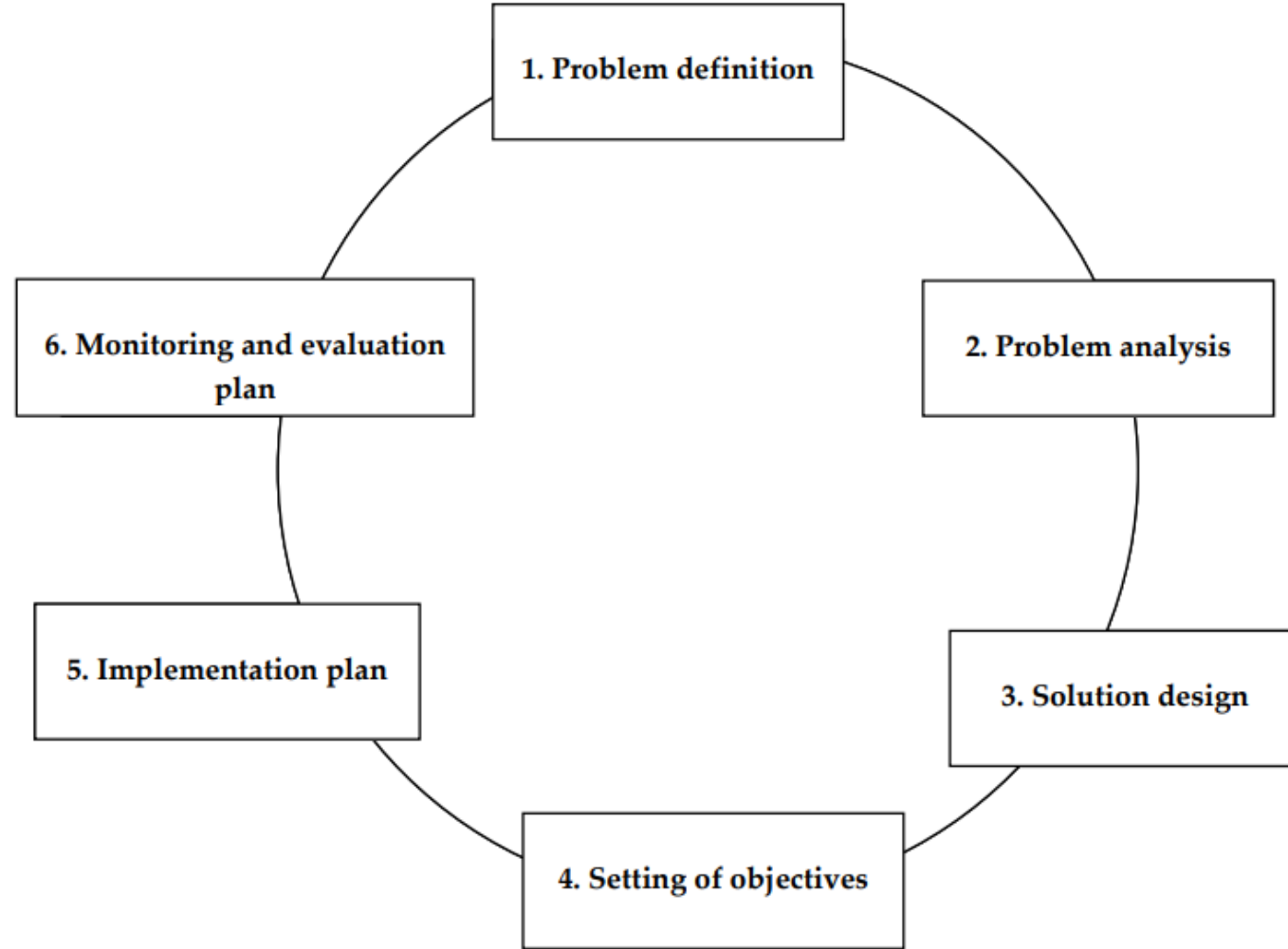
# Public Health Approach



# The Triple A Cycle



1. Assessment: situation analysis; identify problems and select opportunity for improvement
2. Define the problem operationally
3. Identify who needs to work on the problem
4. Analyze and study the problem to identify major causes
5. Develop solutions and action for quality improvement
6. Implement and evaluate quality improvement effort

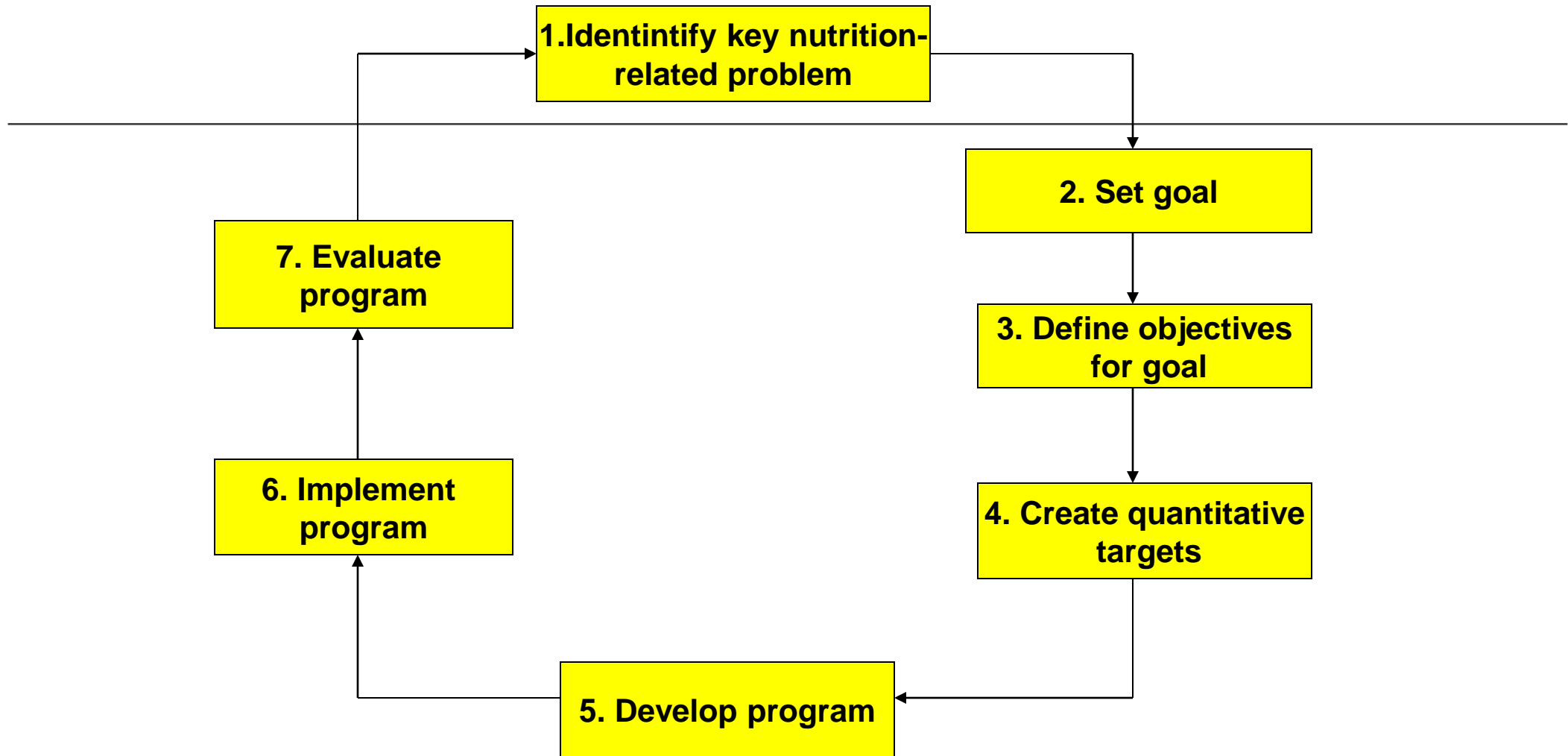


# A problem well stated is a problem half solved

---

Problem definition involves stating the problem, population affected, context (geographical, economic, historical, ethnic) and the time frame

# The public health nutrition cycle



**Table 1. Problem identification****a) List of identified indicators**

<b>Health</b>		<b>Service coverage</b>	
<b>Indicator</b>	<b>Definition</b>	<b>Indicator</b>	<b>Definition</b>

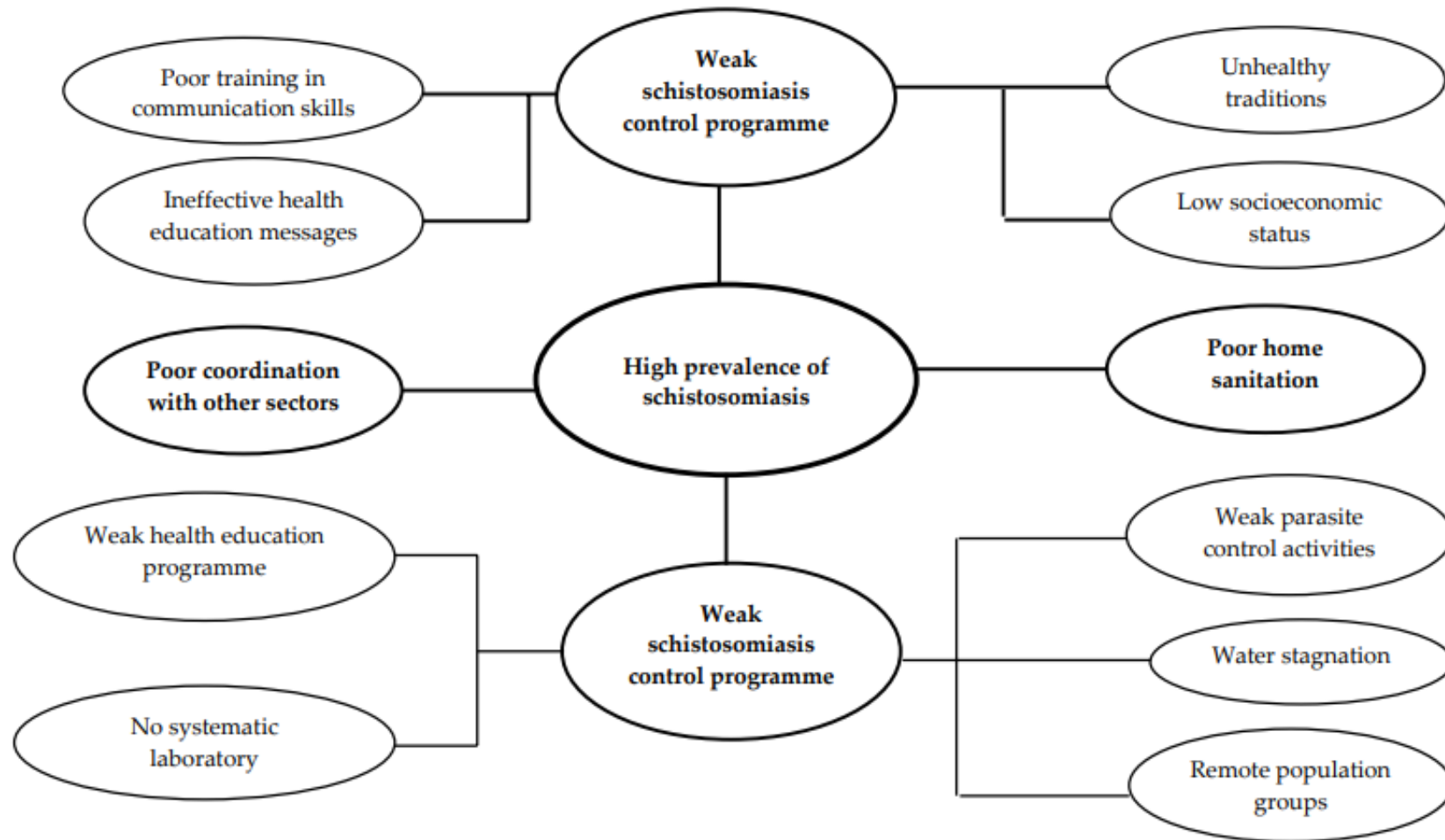
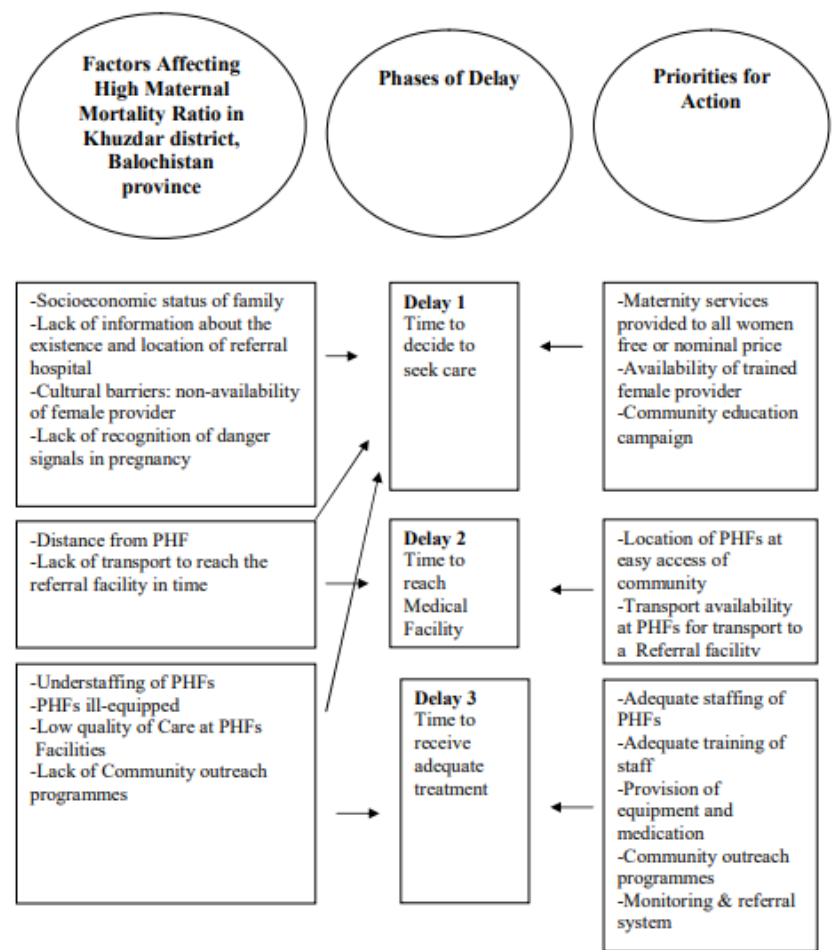


Figure 3. Problem diagram



Fig 1 Factors affecting high maternal mortality ratio in Khuzdar district, Balochistan province of Pakistan



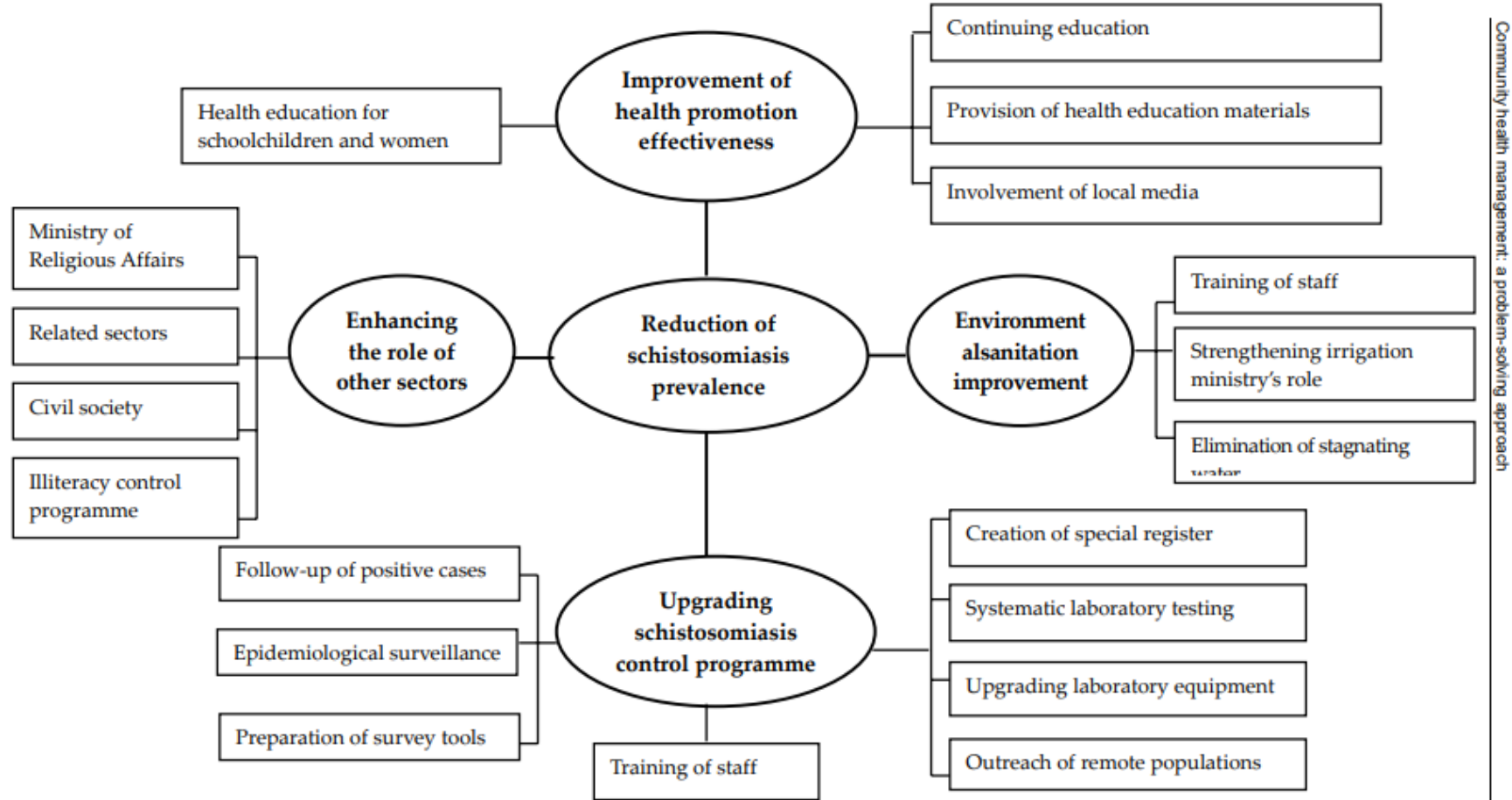
PHF= Peripheral Health Facility

**Table 2. Scoring grid for feasibility and effectiveness**

Activity	Support from upper levels	Availability of local resources	Willingness of community to participate	Willingness of other sectors to collaborate			Total
Total							

Excellent: 4    Very good: 3    Good: 2    Possible: 1

Score each parameter from (1) to (4) according to the level of potential.



**Figure 4. Solution diagram**

**Note:** The example shown in this diagram was developed in a workshop conducted in Sahel Selim in Egypt in 2002.

# 5 A's Behavior Change Model

## Adapted for Self-Management Support Improvement

Self-Management Model with 5 A's (Glasgow, et al, 2002; Whitlock, et al, 2002)

